

# FeelSafe SDX 5030™



**ADVANCED TECHNOLOGY**

**EXTREME RELIABILITY**

**EXCEPTIONAL VALUE**

## Digital Radiography

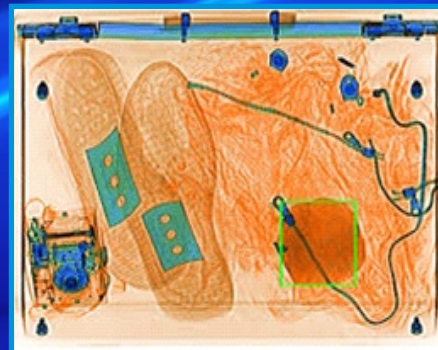
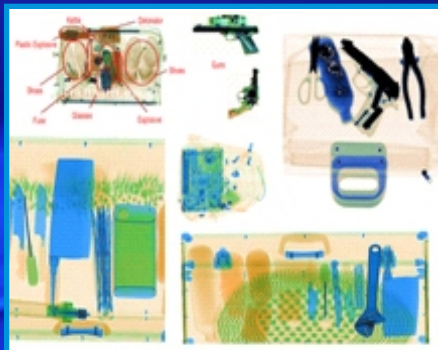
Evolve Technologies, India's first indigenous DXIIS manufacturer, launches the **ETS3107-SDX Series** of Baggage Scanners for Hotels, Shopping Centers, Cargo Facilities & other high security areas.

**Evolve's ETS3107-SDX Series** bring together advance technology and extreme reliability to provide optimum security solutions.

## Advanced Technology

**Evolve's ETS3107-SDX Series** incorporates the world's best technology with capabilities to detect prohibited inorganic & organic materials like weapons, explosives, narcotics, etc

**Evolve's ETS3107-SDX Series** is mated to Evolve's Safeview™ software which uses 6 color image to display and automatic marking to enhance the operator's ability to identify suspicious items.



## Extreme Reliability

**Evolve's ETS3107-SDX Series** is built 'in a state of the art' manufacturing facility and meets the most stringent requirements with regards to product strength and structural integrity. It has been subjected to rigorous testing in challenging conditions and extreme environment.

**Evolve's ETS3107-SDX Series** operating temperature is from 0°C to 50°C and storage temperature is from -20°C to 70°C

## Standard Features:

- Automated Image archiving-upto 50,000 images.
- User friendly image review-upto 15 images.
- High-resolution 17"(43.18 cm) color monitor.
- Bi-directional conveyor movement.
- 2X to 16X User- selectable zoom.
- Organic and inorganic imaging.
- Manual archiving of images.
- Edge-enhancement imaging.
- Six color imaging.
- Print Image function.
- Heavy duty rollers.
- Baggage counter.
- Date & Time
- 600 VA UPS for CPU
- Previous Image Viewing
- High Density Detection

## Optional Accessories and Features :

- Entry Exit rollers (0.5m, 1m, 1.5m).
- Barrier for roller table
- 2 kVA UPS for machine



## Standard Safety Features Include:

- Emergency Stop Switch.
- Tunnel Curtains to prevent X-Ray leakage.
- Safety interlock design.

## ETS3107-SDX Series - Safety in Design

The Design of the ETS3107-SDX Series of machines gives top most priority to the prevention of X-Ray radiation with operator safety being the fundamental guideline.

The ETS 3107-SDX Series complies with all safety norms as per AERB and X-ray emissions are less than 1 $\mu$ Sv/hr at the outer panels as well as entry and exit points of the system.

X-Ray emission takes place only within the inspection chamber and is controlled by the geometry of the machine itself and by special curtains made from the material used to protect operators. An operator does not receive any significant X-Ray dose.

The machine design and electrical controls meet X-Ray safety regulations controlled by AERB and are documented through a unique certificate for each design.

## User Friendly Operating Interface

Evolve's ETS3107-SDX Series uses Evolve's SafeView software, whose interface is designed keeping the user's ease in mind. The software interface is simplified such that even first time users can operate the machine comfortably.

Evolve's ETS3107-SDX Series is powered with single click assistance features like Call Maintenance, Screener Assist, Transmit to Police, Transmit to Supervisor etc.

# Technical Data

## General Specifications:

<b>FeelSafe SDX 5030</b>	
Tunnel Dimensions in mm	540 mm x 340 mm
Maximum Object size in mm	500 mm x 300 mm
Conveyor Speed	0.2 m/s
Maximum Conveyor Load	160 Kg (Evenly Distributed)
Resolution (Wire Detectability)	Std.38 AWG (0.16 mm)
	Typ.40 AWG (0.10 mm)
Penetration (Steel)	30 mm
X-Ray Radiation Leakage	<1 $\mu$ sv/h
Duty Cycle	100%
<b>X-Ray Generator</b>	
Anode Voltage	Maximum 160kV
Current	1.25 mA
Cooling	Sealed Oil Bath with Forced Air
Beam Direction	Diagonal
<b>Image Generating System</b>	
X-Ray Converter	L-Shaped Line Array Detector
Image Presentation	B/W and Color
Image Evaluation function	ETS Safe View
Monitor	17 inch monitor
<b>Installation</b>	
X-Ray Leakage	Meets all applicable laws as per AERB
Operating Temperature	0°C to 50°C
Storage Temperature	-20°C to 70°C
Humidity (Non Condensing)	98%
Power Supply	230 V-AC, 50Hz
Power Consumption	0.6 kW
Dimensions	1710 mm(L) x 865 mm(W) x 1210mm(H)



**Excellence in Imaging Products**

**EVOLVE TECHNOLOGIES & SERVICES PVT. LTD.**

J-531 MIDC Bhosari, Pune- 411026. India.

Telephone.: +91-20-4660 6504 / 4076 7777